

### MAWSON LAKES



Mawson Lakes was a new suburb, planned by Delfin Lend Lease on the dusty plains north of Adelaide and next to the existing UniSA Levels Campus. In 15 years it has been transformed into a thriving community which has placed lifelong education as a focus of its planning, and how the University, schools, the Education Department, the town planners and the Local Council became involved and collaborated in a series of interesting developments. We will be visiting the following buildings:

- MM (Minerals and Materials Science)
- Mawson Lakes School
- UniSA College Science and Maths Centre
- Mawson Institute Building V
- Sir Eric Neal Library & LTU Services
- Garth Boomer Building
- Mawson Centre

As well as visiting these projects we will hold a discussion on lessons learnt, how education needs to be integrated into planning, and whether future developments can take up the challenge.

#### Architects:

MM: *John Wardle and Swanbury Penglase in association*

Sir Eric Neal Library: *Thomson Rossi Architects*

Library LTU fitout: *Phillips Pilkington*

Mawson Centre, Mawson Lakes School, Mawson Institute

& Garth Boomer Building:

*Guida Moseley Brown and Russell & Yelland in association*

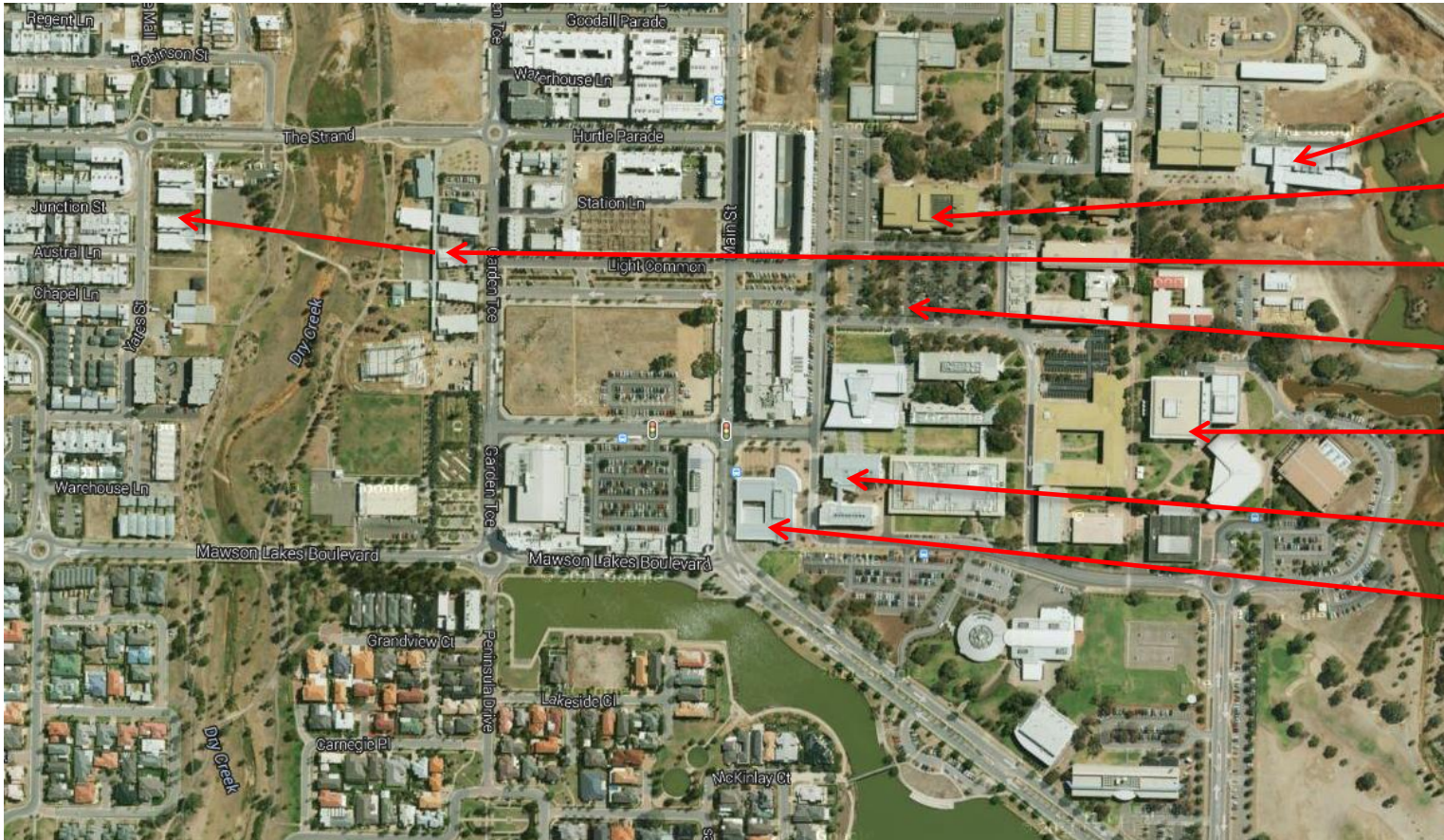
Science and Mathematics Centre:

*Russell & Yelland Architects*

#### Tour Leaders:

John Held, Russell & Yelland [jfheld@rusyel.com.au](mailto:jfheld@rusyel.com.au) ph +61 8 81728700 m. 0417840337  
Christina Coleiro UniSA Facilities Management UniSA [Christina.Coleiro@unisa.edu.au](mailto:Christina.Coleiro@unisa.edu.au)

### MAWSON LAKES



- Mawson Institute Building V
- UniSA College Science and Maths Centre
- Mawson Lakes School
- M2 (Minerals and Materials Science)
- Sir Eric Neal Library & LTU Services
- Garth Boomer Building
- Mawson Centre